

CONVERT NAD83 TO NAD27 USING NADCON

An easy way to obtain a NAD27 solution would be to convert the base station to NAD27, and process in NAD27. If you would like to leave the base station in NAD83, you may try the following:

Create transformation

1. Create a transformation. Make sure the 'From' datum and the 'To' datum is in the appropriate place.

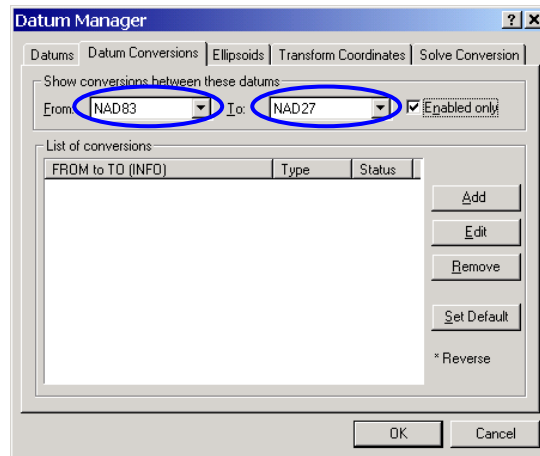


Figure 1.

2. Click on 'Add'
 - a. Give a meaningful name under 'Info string'.
 - b. Select 'Nadcon(NGS)'.
 - c. Select the .las file (e.g. Conus.las)

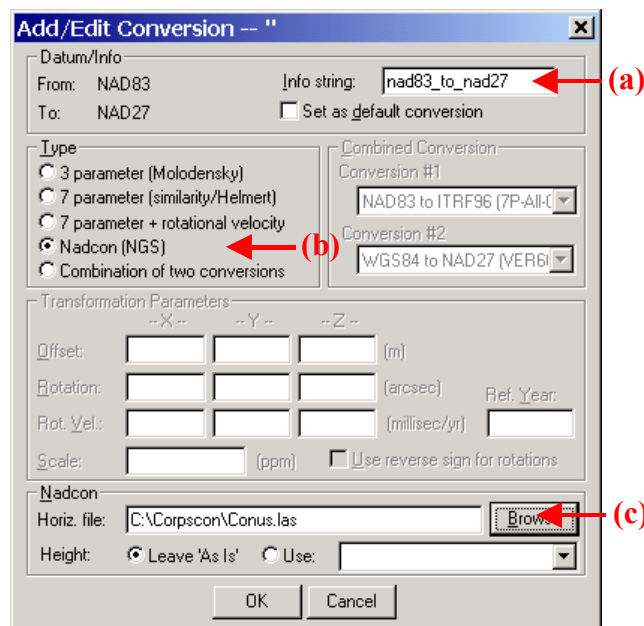


Figure 2.

Process/Output

1. Click on 'More Datum Options' button under 'Processing Datum':

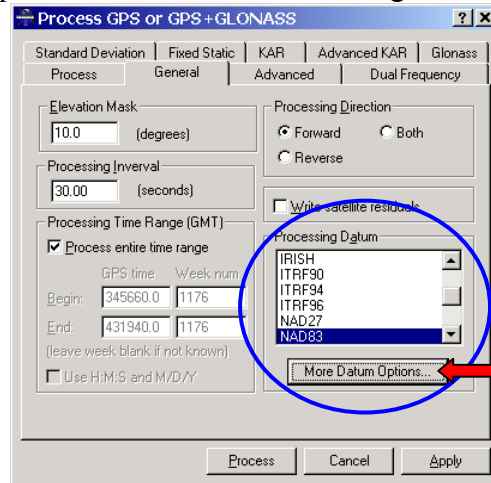


Figure 3.

2. Change the following options:
 - a. Select your processing datum (e.g. NAD83).
 - b. Select 'Convert input coordinates to processing datum (for Nadcon and localized datums)'. Now select the 'Input Datum' (e.g. NAD27). What this step does is that it converts the input coordinates (base station coord) to what is shown in 'Input datum' drop box.
 - c. Under 'Conversion from input datum to processing datum', make sure that the drop box shows the transformation that you created.

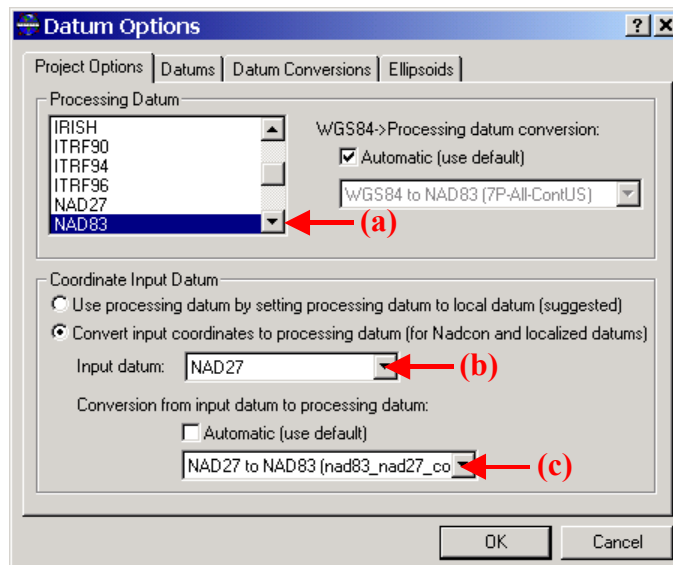


Figure 4.

3. Click OK and Process.

4. The next thing that you probably want to do is to export the solution. Go to 'Export Wizard', and once you reach the following screen:

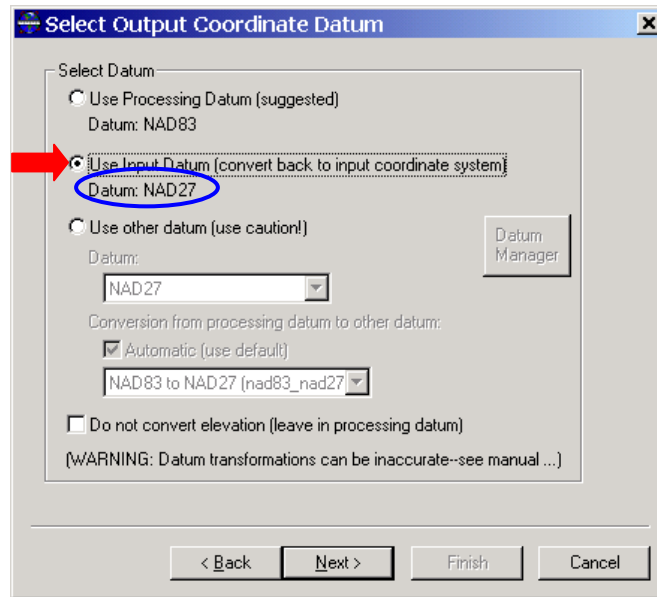


Figure 5.

Select 'Use Input Datum (convert back to input coordinate system)'. To make sure you have the right datum, the next line underneath 'Datum: NAD27' will indicate the datum of the output.