

RTKNav MFC Application Error

Problem: MFC Application Error while running RtkNav on Windows XP.

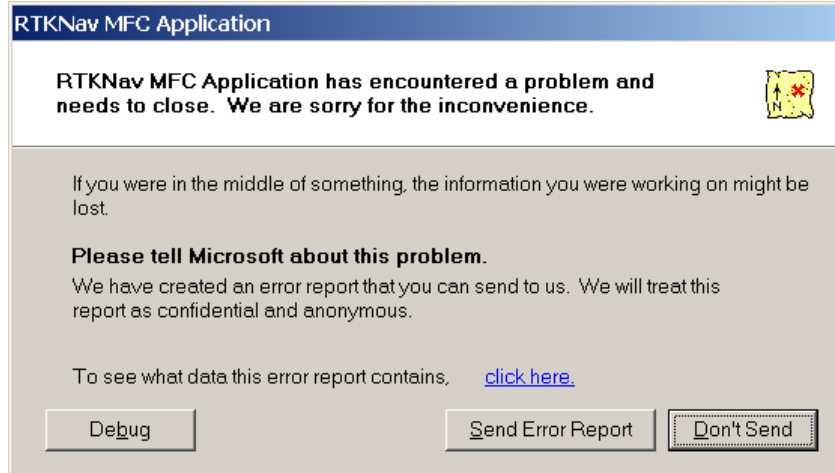


Figure 1 RTKNav MFC Application Error

If you are getting an error message similar to the above, you might have to change the display mode of Windows. Go to the Display option under Control Panel (Start | Control Panel | Display). Under the Themes tab, change the theme to Windows XP if the current theme is Windows Classic or change to Windows Classic if the current them is Windows XP. To distinguish the difference between the two modes, you'll notice that the Classic mode has gray buttons and windows.

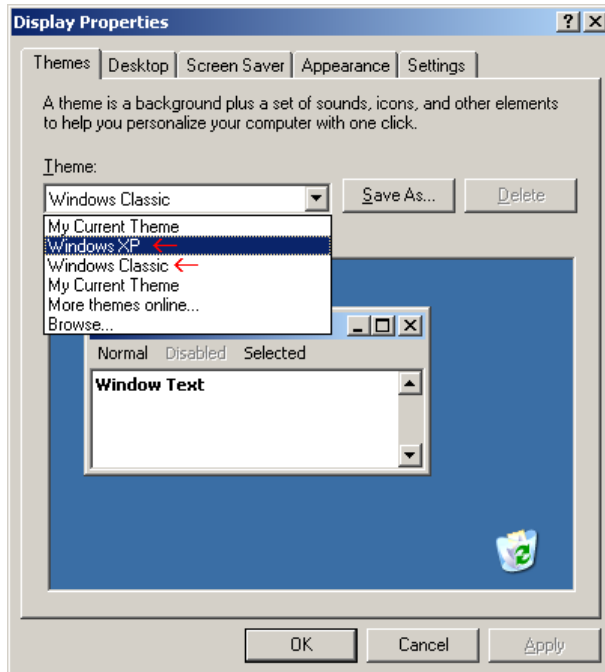


Figure 2 Display Option