

Processing Seismic Data

Move to Static

After adding the master and remote, you will need to 'Move to Static'. This can be done under View/Edit Features, which is under the Output menu. You will see the following screen:

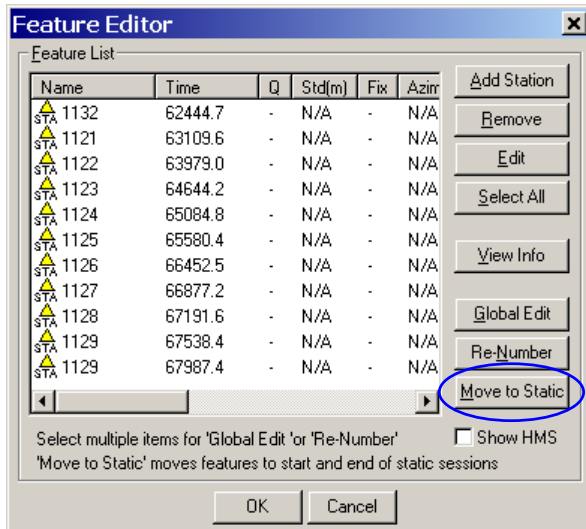


Figure 1. Feature Editor (before)

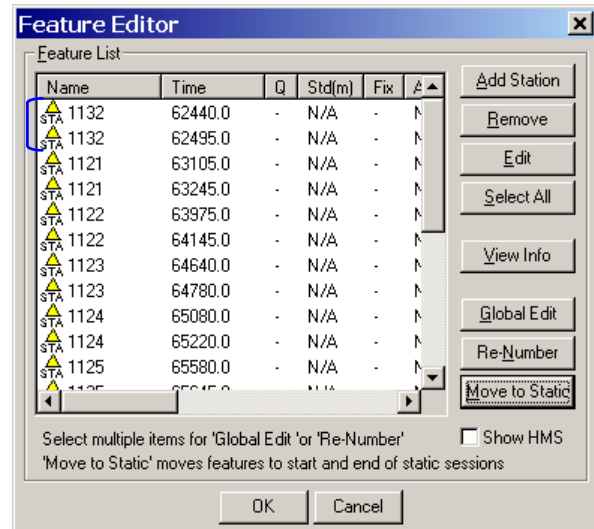


Figure 2. Feature Editor (after)

Click on 'Move to Static', you will now see that there are two of each station marks listed (see Figure 2). What this option does is that it will duplicate the station marks and move one to the beginning of the static period and one to the end of the static period.

Process

You may now start processing the data. The following are some of the options that may help:

- Engage KAR while in STATIC mode (under KAR tab) – since there are periods of static
- The following will help if you are under trees a lot (under the Advanced KAR tab)
 - Stricter reliability tolerance
 - Use fast KAR
 - Refine L1/L2 search
- Occupation mode (under Process tab) – try with and without

Check/Compare

Once GrafNav has finish processing, you may want to check/compare the solution. This can be done using Export Wizard (under the Output menu).

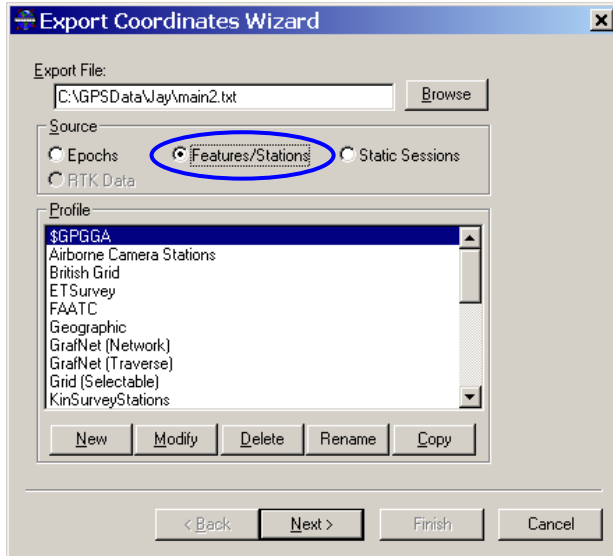


Figure 3. Export Wizard

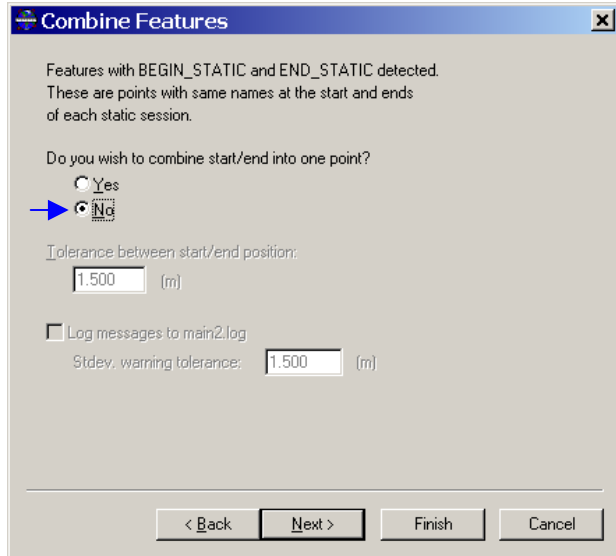


Figure 4. Combine Features

Under Source select Features/Stations and select a profile you prefer. Later you will come to the Combine Features window, select 'No' (see Figure 4). The reason why we select no is so that we can see the difference between the two points. Once Export Wizard has finish, you'll be able to see the results. Compare the two solutions for each Station Marks, especially the height. The difference will give us an approximation of the accuracy.

Final Solution

After checking and comparing the result and are satisfy, you may want to output the final solution. Just repeat the same steps as **Check/Compare** except when you come to the Combine Features window choose 'Yes'. Once Export Wizard has finish, you will be able to view the final result.