

## Error Message in Output File (Extended Output Format)

If you are getting the error message "Use Extended output Format in GrafNav" in your solution, try the following methods.

### Process Options

The message "Use Extended output format in GrafNav (30 occurrences)" just asks you to process in "Extended" format. You can find this option in 'Processing Options' under the 'Advanced' tab, change the 'FWD/REV file format' drop down box to 'Extended':

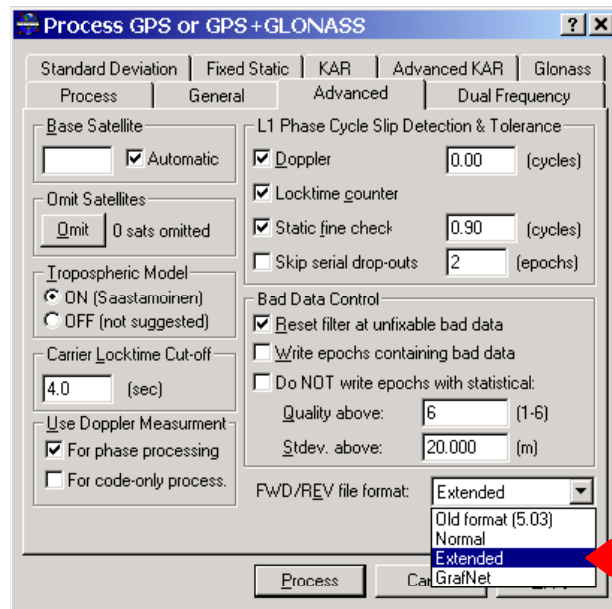



Figure 1. Process in Extended Format

## Output Wizard

You can remove the error messages using 'Export Wizard'.

1. You can find 'Export Wizard' under the 'Output' menu or simply click . Once 'Export Wizard' has opened, click on 'Modify'

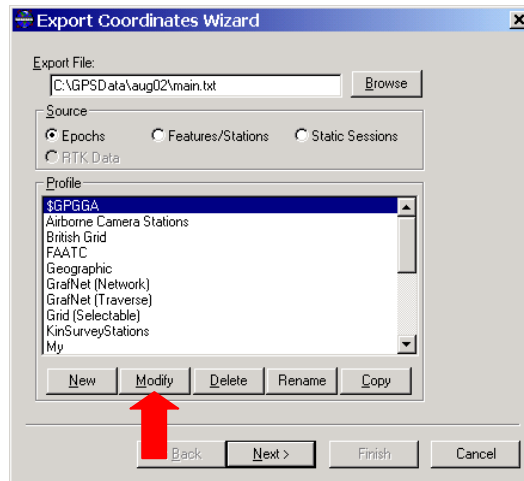


Figure 2. Modify Export Wizard

2. You will see the following screen:

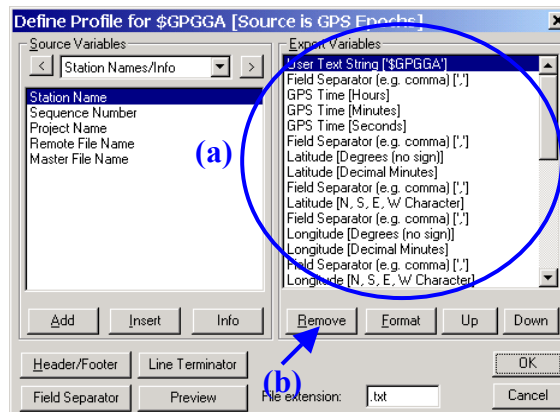


Figure 3. Remove Export Variables

You can remove any 'Export Variables' with the following steps:

- a. First select the Variable
- b. Then click 'Remove'