

## Copy User Files

User files such as Export Wizard profiles, favorite points, and antenna, datum and grid definitions can be copied or backup. There are two ways to do this:

1. Running Copy User Files program.
2. Manually copy the files.

The following are the list of files that are copied by the Copy User Files program or if the user chooses to manually copy. Note that not all the files will be available.

- User.prf – Export Wizard profiles
  - User.fvt – Favorite points (from Favourites Manager)
  - User.dtm – Datum definitions
  - User.grd – Grid definitions
  - Custom.ant – Antenna definitions
  - Local.fav – Local Coordinate Favorites
  - Missplan.mpf – Cities defined in Mission planner
  - User.adf (\*\*) – Antenna definitions (new format)
  - \*.Defopt (\*\*) – User defined project/option settings
- (\*\*) These files are only available on v7.00.

### 1. Running Copy User Files Program

Copy User Files program will automatically run at the end of the installation. You may also run the program yourself from the Windows Start button | Waypoint GPS | Utilities. The program will let you set the path of the source directory. The destination will automatically set for you. If you would like to set your own destination, then go to method 2. Manually copy the files.

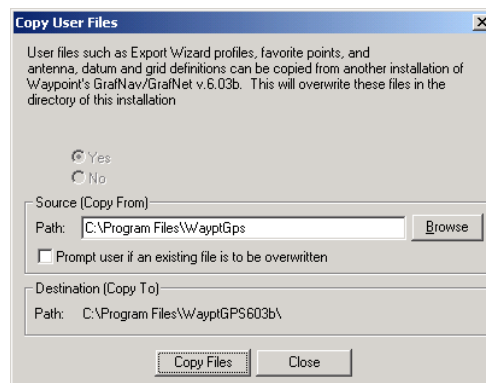


Figure 1 Copy User Files

### 2. Manually Copy the Files

To manually copy or backup the files, just simply copy the list of files above to your destination.