

# OEMV-1, OEMV-1G, OEMV-2 or OEMV-3 Card

## QUICK START GUIDE



This guide provides the basic information you need to set up and begin using your new OEMV family card. For more information on the installation and operation of your receiver, please refer to the *OEMV Family User Manuals* on the CD provided. The technical specifications of the OEMV family of cards are contained there also. To order a printed copy of the manuals, free of charge, follow the instructions given on the enclosed *User Manuals* postcard. The most up to date revisions of these manuals can be found on our website at <http://www.novatel.com/Downloads/docupdates.html>.

Also on the CD are an installation program for NovAtel's PC utilities including **CDU** (Control and Display Unit), the OEMV Software Development Kit including *OEMV Sample Source Code* and Universal Serial Bus (USB) drivers with their installation instructions.

### BOX CONTENTS

In addition to this *Quick Start Guide*, the following is provided with your OEMV family card:

- 1 ESD wrist strap
- 1 *OEMV Family Quick Reference Guide*
- 1 postcard for requesting printed user manuals

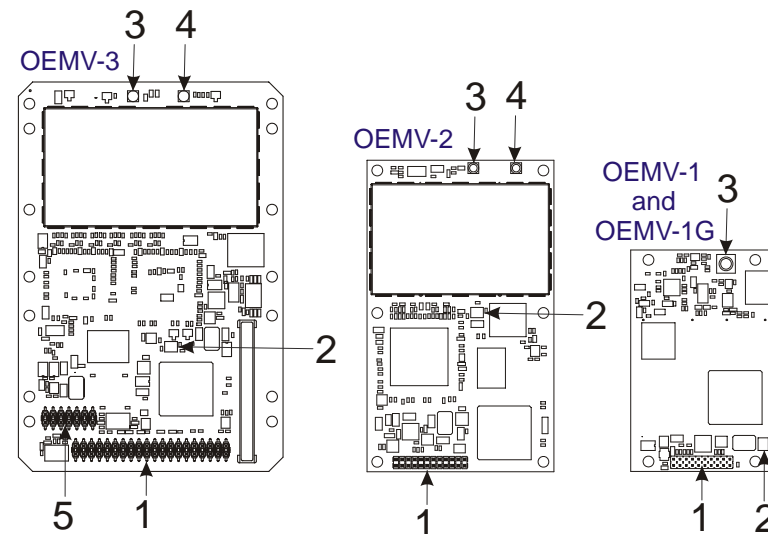
### ADDITIONAL EQUIPMENT REQUIRED

The additional equipment listed below is required for a basic setup:

- A Windows-based computing device with a RS-232 DB-9 or USB port
- A power supply between 4.5 and 18 VDC for the OEMV-3 card, and 3.3 VDC for the OEMV-1, OEMV-1G and OEMV-2 cards, capable of providing at least 5W

- An enclosure to protect against environmental conditions and RF interference
- A wiring harness, see *Figure 2*, to provide power to the receiver and access to the data and strobe signals, with one or more DB-9 connectors for serial communication with a PC or other data communications equipment
- A null-modem cable, see *Figure 3* for an example
- A quality GNSS antenna, such as our GPS-702 (L1/L2), 702GG (plus Glonass) or 702L (plus L-Band), see *Figure 4* for an example
- An antenna cable with a male MCX (OEMV-1) or MMCX (OEMV-2 and OEMV-3) connector at the receiver end, see *Figure 5* for an example.

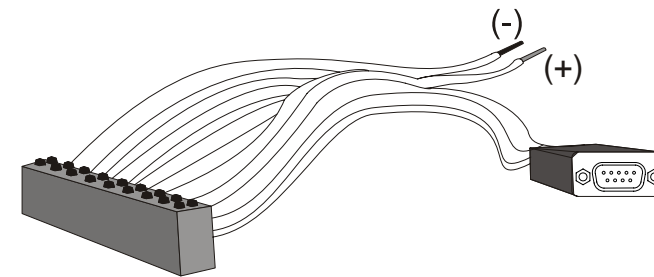
*Figure 1* shows the cards, their connectors and indicators.



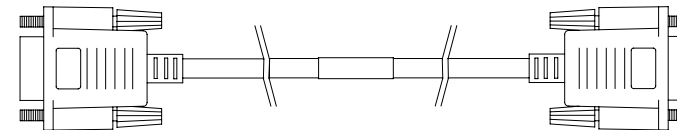
Ref. #	Description
1	Power/data/signal connector (OEMV-1:20; V-2:24; V-3:40-pin)
2	LED status indicator
3	RF signal in/LNA power out (OEMV-1: MCX;V-2/V-3: MMCX)
4	External oscillator input (MMCX)
5	CAN bus connector with transceiver

**Figure 1: Connector and Indicator Locations**

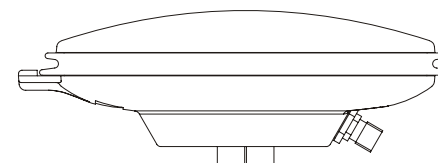
- ☒ To create a common ground, tie together all digital grounds (GND) with the ground of the power supply.



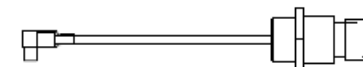
**Figure 2: User-Supplied Wiring Harness Example**



**Figure 3: User-Supplied Null-Modem Cable Example**



**Figure 4: User-Supplied Antenna (702 Example Shown)**



**Figure 5: User-Supplied MMCX to TNC Cable Example**

## SETTING UP YOUR OEMV FAMILY CARD

Complete the steps below to connect and power your OEMV family card. See the *OEMV Family Installation and Operation User Manual* for more information on steps 2 through 5.

1. Install the OEMV family card and the wiring harness in a secure enclosure to reduce environmental exposure and RF interference, making sure to protect against ESD.



**CAUTION: If you do not take the necessary precautions against Electrostatic Discharge (ESD), including using the provided ESD wrist strap, you may damage the OEMV card and void your warranty.**

2. Reconfigure the ports if necessary. COM1 on the OEMV-1 and OEMV-1G cards are configured in LVTTL mode while COM1 on the OEMV-2 and OEMV-3 cards are configured in RS-232 mode by default. COM1 on the OEMV-3 can be reconfigured to RS-422 or LVTTL using jumpers.
3. Mount a GNSS antenna on a secure, stable structure with an unobstructed view of the sky.
4. Connect the GNSS antenna to the OEMV family card using a coaxial cable.
5. Connect a serial port on the receiver to a serial port on the PC, or other computing device, using a null modem cable.
6. Connect a power supply to the OEMV family card.
7. Plug in and/or turn on the power supply.

## INSTALLING THE PC UTILITIES

Once the OEMV card is connected to the PC, antenna, and power supply, install NovAtel's PC Utilities.

1. Start up the PC.
2. Insert the OEMV CD, see *Figure 6*, in the CD-ROM drive of the computer.
3. Select *Install the OEMV PC Utilities* from the window that is automatically displayed. If the window does not automatically open when the CD is inserted, select *Run* from the *Start* menu and then the *Browse* button to locate *Setup.exe* on the CD drive.
4. Install the PC Utilities by advancing through the steps provided in the *NovAtel PC Utilities* setup program.

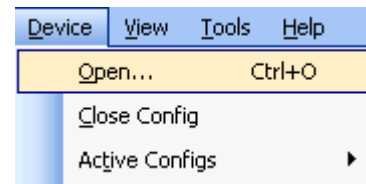


Figure 6: OEMV CD Example

## ESTABLISHING RECEIVER COMMUNICATION

To open communication with the receiver, follow these steps.

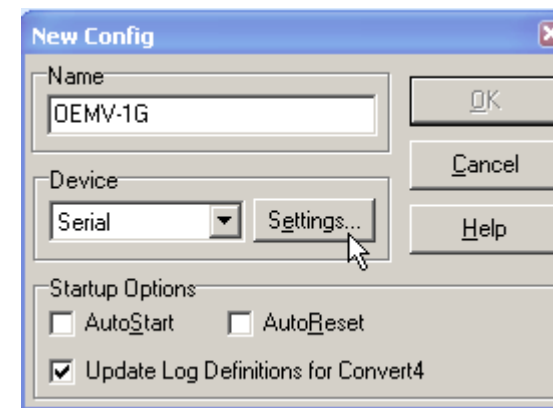
1. Launch **CDU** from the *Start* menu folder specified during the installation process. The default location is *Start | Programs | NovAtel OEMV | OEMV PC Software*.
2. Select *Open....* from the *Device* menu.



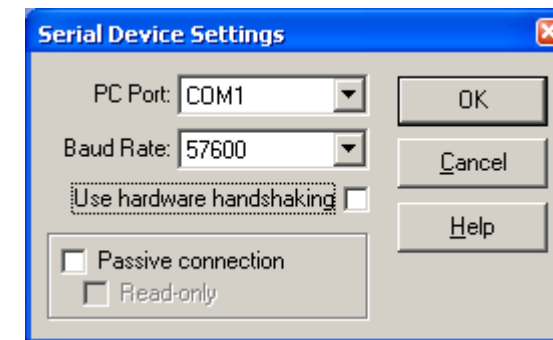
3. Select the *New...* button in the *Open* dialog box.



4. Enter a name for the new device configuration in the *Name* field of the *New Config* dialog box and select the *Settings* button.



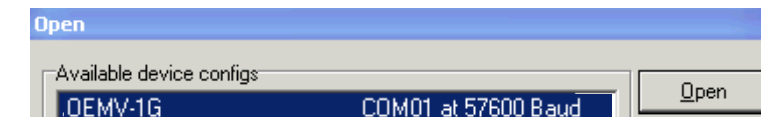
5. Select the PC serial port the OEMV card is connected to from the *PC Port* drop-down list.
6. Select *57600* from the *Baud Rate* list.
7. Uncheck the *Use hardware handshaking* checkbox.
8. Select *OK* to save the settings.



9. Select the *OK* button to close the *New Config* dialog box and create the new device configuration.

10. Select the new configuration from the *Available device configs* list in the *Open* dialog box.

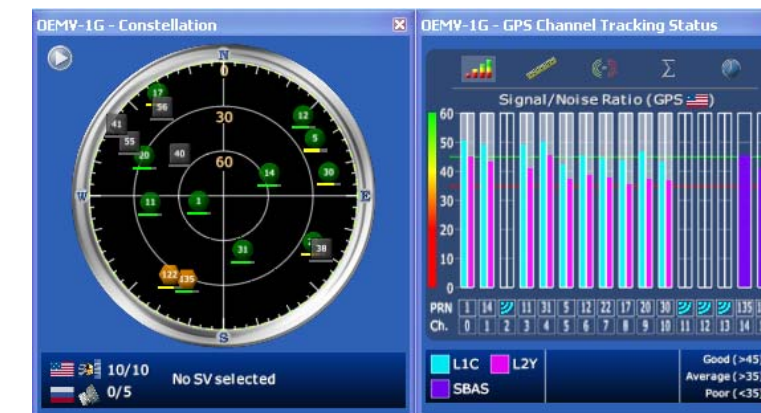
11. Select the *Open* button to open communications with the OEMV card.



As **CDU** establishes a communication session with the receiver, it displays a progress box. Once **CDU** is connected, the progress box disappears and several windows open, including the *Console* window. **CDU** is now ready to be used to view status information, enter commands, or log data.

## USING CDU

**CDU** provides access to key information about your receiver and its position. The information is displayed in windows accessed from the *View* menu. For example, select *Position Window* from the *View* menu to display the position solution of the receiver. To show details of the GNSS and geostationary (SBAS) satellites being tracked, select a *Tracking Status Window* (*GPS* or *GLONASS*) from the *View* menu. Select *Help* from the main menu for more details on **CDU**, its windows and features.



## DETERMINING WHEN THE POSITION IS VALID

When the receiver has a valid position, the *POSITION VALID* or *PV* signal pin of the DIN connector changes to a logic level high (LVTTTL). In addition, the *Solution Status* field in **CDU's** *Position* window shows *Computed*.



## ENTERING COMMANDS

The OEMV family cards use a comprehensive command interface. Commands can be sent to the receiver using the *Console* window in **CDU**, which is opened from the *View* menu. Enter commands in the text box at the bottom of the Console window.



The following information is important when entering commands:

- Commands can be entered in three formats: ASCII (log bestposa), Abbreviated ASCII (log bestpos), and Binary (log bestposb). Abbreviated ASCII is the best format to use when you wish to work with the receiver directly. For data collection, use ASCII or Binary.
- Press the *Enter* key to send the command string to the receiver.
- The commands are not case sensitive.

The *OEMV Family Quick Reference Guide* provided with the receiver lists the available commands and the parameters they use for the *Abbreviated ASCII* format.

## LOGGING DATA

An extensive collection of logs has been created to capture the data your OEMV family card receives and processes. These logs can be directed to any of the OEMV family card's serial ports and can be automatically generated when new or changed data becomes available or at regular intervals. The available logs are listed in the *OEMV Family Quick Reference Guide*.

To log data, use the LOG command. For example, to log the pseudorange position to COM 2 every 30 seconds, enter the following:

```
LOG COM2 PSRPOS ONTIME 30
```

Logs can be generated in one of three formats: ASCII, Abbreviated ASCII, or Binary. Refer to the *OEMV Family Firmware Reference Manual (OM-20000094)* for information on the LOG command, specifying the output format, and the detailed contents of each log.

If you prefer, **CDU** provides a graphical interface for configuring data logging. Select *Logging Control Window* from the *Tools* menu. In the *Logging Control* window, you can select which logs to capture and choose to which ports to send the data. In addition, you can specify a file in which to save the data.



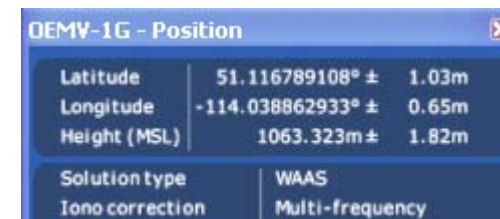
## ENABLING SBAS

All models of OEMV family cards are capable of SBAS positioning. This positioning mode is enabled using the SBASCONTROL command. These commands are typically used to enable WAAS (North America) and EGNOS (Europe) respectively:

```
SBASCONTROL ENABLE WAAS
```

```
SBASCONTROL ENABLE EGNOS
```

Once enabled, the *Position Type* field shown in **CDU's** *Position* window should change from *Single* to *WAAS* and you may see SBAS satellites in the *Constellation* window.



## ENABLING L-BAND (OEMV-1 and OEMV-3 only)

L-Band equipped receivers allow you to achieve sub-meter accuracy. To use this positioning mode, you must enable L-band tracking to the Canada-Wide Differential GPS (CDGPS) or OmniSTAR signal. A subscription to OmniSTAR is required to use the OmniSTAR VBS, XP or HP service (visit <http://www.omnistar.com> with your receiver serial number ready). The CDGPS signal is free and available without subscription over North America (visit <http://www.cdgps.com>).

The ASSIGNLBAND command allows you to set OmniSTAR or CDGPS base station communication parameters. It should include a relevant frequency and data rate. The frequency assignment can be made in Hz or KHz. For example:

```
Hz: assignlband omnistar 1536782000 1200
```

```
KHz: assignlband omnistar 1536782 1200
```

A value entered in Hz is rounded to the nearest 500 Hz.

To confirm you are tracking an L-Band signal, log the L-Band status information by entering: log lbandstat. For example, if you are receiving CDGPS, the fifth field after the header should be 00c2:

```
lbandstata com1 0 43.5 finesteering 1295  
149951.671 00000000 976f 34461;  
1547546977 46.18 4541.0 0.00 00c2 00f0 ...
```

To specify the correction source, use the PSRDIFFSOURCE command as shown in the examples below:

```
PSRDIFFSOURCE OMNISSTAR or,  
PSRDIFFSOURCE CDGPS
```

otherwise it is left at the default AUTOMATIC.

---

✉ Refer to the *OEMV Family Firmware Reference Manual* for more on individual L-Band, GLONASS or SBAS commands and logs.

---



## REAL-TIME KINEMATIC (RTK) POSITIONING

Corrections can be transmitted from a base station to a rover station to improve position accuracy. The base station is the GNSS receiver which is acting as the stationary reference. It has a known position and transmits correction messages to the rover station. The rover station is the GNSS receiver which does not know its exact position and can receive correction messages from a base station to calculate differential GNSS positions.

In most cases you need to provide a data link between the base station and rover station (two NovAtel receivers) in order to receive corrections. SBAS and L-Band corrections can be accomplished with one receiver and are exceptions to the base/rover concept. Generally a link capable of data throughput at a rate of 9600 bits per second, and less than 4.0 s latency, is recommended.

Once your base and rover are set up, you can configure them for RTCA, RTCM, RTCMV3, CMR+ or CMR corrections. Below is an RTCM example (replace the latitude, longitude and height coordinates shown with those of your base):

### Base

```
interfacemode com2 none rtkm off
fix position 51.11358042 -114.04358013
1059.4105
log com2 rtkm3 ontime 10
log com2 rtkm22 ontime 10 1
log com2 rtkm1819 ontime 1
log com2 rtkm1 ontime 5
```

### Rover

```
interfacemode com2 rtkm none off
```

RT-2 (OEMV-2 and OEMV-3) and RT-20 (OEMV-1, OEMV-1G, OEMV-2 and OEMV-3), all with AdvVance RTK, are real-time kinematic software products developed by NovAtel. Optimal RTK performance is achieved when both the base and rovers are NovAtel products. However, AdvVance RTK will operate with equipment from other manufacturers when using RTCM messaging.

RT-2 and RT-20 are supported by GPS-only and GPS+GLONASS OEMV-based models. Also, RT-20 with GPS+GLONASS provides faster convergence.

- 
- ✉ 1. Refer to the GPGST log's usage box in the *OEMV Firmware Reference Manual* for a definition of RMS and other statistics.
  - 2. For more base/rover configurations, search the key words "rover base" on our Knowledge Database at:

<http://www.novatel.com/support/knowledgedb.htm>

---

## USING THE CAN BUS

A CAN Bus is a serial bus that provides services for processes, data and network management. On OEMV-1/1G cards, the CAN port is shared with the EVENT2 input and VARF output. On the OEMV-2 cards, CAN pins are shared with Event2 input and the GPIO signal. They require external CAN transceivers and proper bus terminations. The OEMV-3 has two CAN transceivers, CAN1 and CAN2. Proper bus termination is required. CAN Bus functionality is controlled through NovAtel's optional API software available through Customer Service. The API header file (\*.h), in the API folder after installation, includes documentation on using the CAN Bus.

## EXTERNAL OSCILLATOR (OEMV-2 and OEMV-3 only)

For certain applications requiring greater precision than what is possible using the on-board 20 MHz, voltage-controlled, temperature-compensated crystal oscillator (VCTCXO), you may wish to connect the OEMV card to an external, high-stability

oscillator. The external oscillator can be either 5 MHz or 10 MHz.

To install, connect a cable from the external oscillator to the card's external oscillator input. The receiver does not have to be powered down during this procedure. If you are handling the OEMV card directly, antistatic practices must be observed.

Once the external oscillator has been installed, issue the EXTERNALCLOCK command to define the clock model (for example, cesium, rubidium or ovenized crystal). If the input clock rate is 5 MHz, you must issue the EXTERNALCLOCK command to change the 10 MHz default rate.

## POST PROCESSING

Post-mission data processing refers to when the GNSS data collected by the receiver is processed after the entire data-collection session is complete.

OEMV-based output is compatible with post-processing software from the Waypoint Products Group, NovAtel Inc. For details, visit our website at:

[http://www.novatel.com/products/waypoint\\_pps.htm](http://www.novatel.com/products/waypoint_pps.htm)

## QUESTIONS OR COMMENTS

If you have any questions or comments regarding your OEMV card, please contact NovAtel using one of these methods:

Email: [support@novatel.com](mailto:support@novatel.com)

Web: [www.novatel.com](http://www.novatel.com)

Phone: 1-800-NOVATEL (U.S. & Canada)  
403-295-4900 (International)

Fax: 403-295-4901



Quick Start Guide:



OEMV Family Cards:



© Copyright 2006-2007 NovAtel Inc. All rights reserved.  
Printed in Canada on recycled paper. Recyclable.  
Unpublished rights reserved under international copyright laws.

GM-14915062

Rev 5

2007/06/26