



Now, what's tomorrow's challenge?

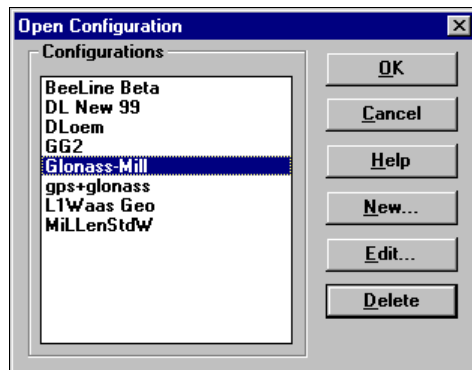
APN-016 Rev 2

October 10, 2000

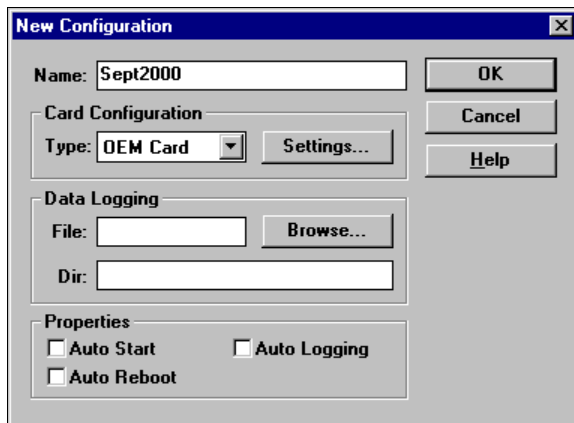
Running GPSolution to Record Data to a File

Here is a simple set of instructions to run GPSolution to record raw data to a file on your hard disk. The examples in this bulletin are for Millennium (OEM3) cards but they can be adapted for use with OEM2 cards.

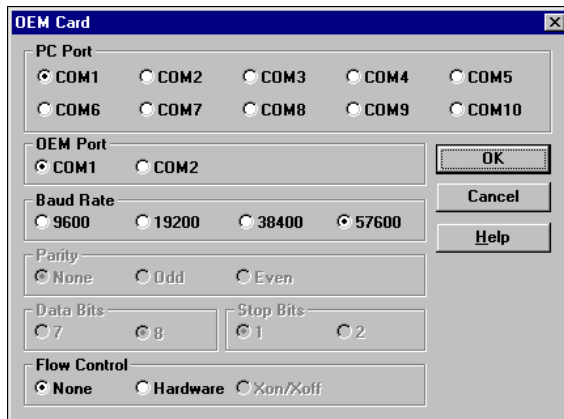
1. Prepare the GPSCard so that it is complete with mounting and wiring interfaces and ready for operation. If you purchased your GPSCard in a PowerPak or ProPak enclosure, it is ready for immediate operation.
2. Connect your antenna to the antenna port of the enclosure, or the RF connector on a GPSCard, using an interconnecting coaxial cable.
3. Connect a null-modem serial cable from your GPS receiver COM1 port to your PC COM1 port.
4. Connect a power supply to your receiver.
5. Run GPSolution on your PC.
6. Select Card | Open from the main menu. The Open Configuration dialog will appear. The example below shows an Open Configuration dialog with many possible configurations already set up. Your configurations may be different or you may have none at all to start with in which case, the Open Configuration window would be empty.



7. Select the previously set up configuration for your receiver (skip to *Step #15*) or click on the **New** button to add a new configuration. The New Configuration dialog will appear.

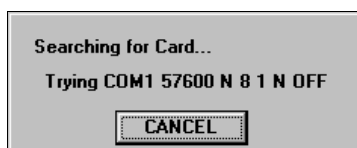


8. Give your new configuration a name in the Name field (30 characters maximum, for example Sept2000 as above).
9. Select the card configuration type in the Type field. Choose OEM Card for a MiLLennium receiver (Ignore the Data Logging and Properties sections as they are not important at this point.)
10. Click on the **Settings** button. The OEM Card dialog will appear.



In the PC Port section, select the port on your PC that your serial cable is plugged into (COM1 in this example). In the OEM Port section, select the port on your receiver that your serial cable is plugged into (COM1 in this example).

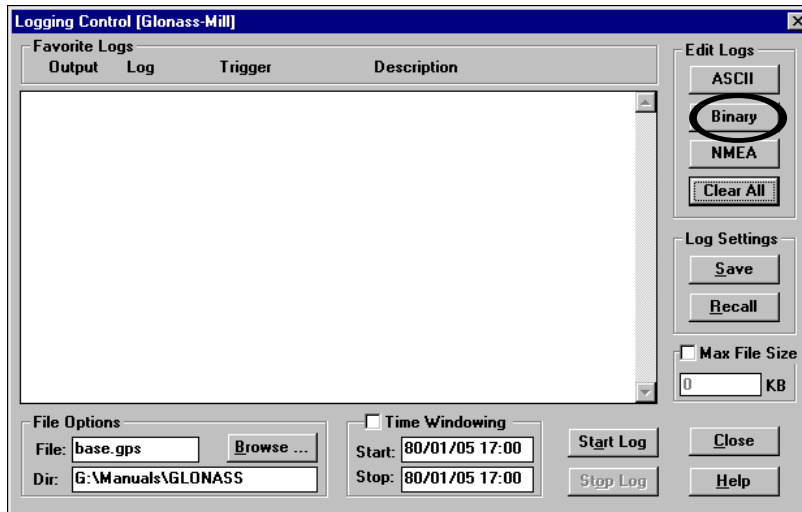
11. In the Baud Rate section, you must select 57600. This will ensure you will be able to use the logs described later in this document. Accept all other defaults and click on the **OK** button to bring you back to the New Configuration dialog (see *Step #7*).
12. Click on the **OK** button to save your new configuration and return you to the Open Configuration dialog (see *Step #6*).
13. Select your configuration by highlighting it in the list and then click on the **OK** button. A message similar to the following will appear while GPSolution searches for your receiver.



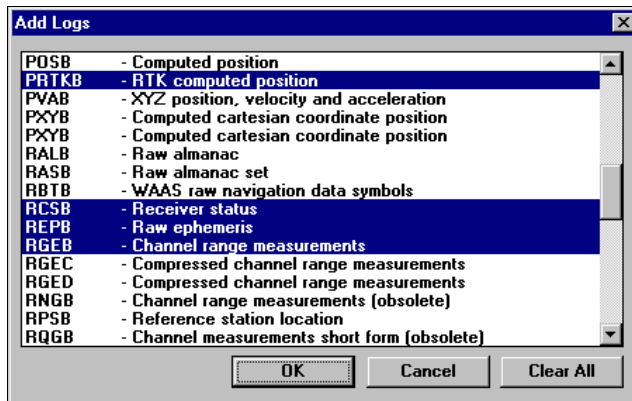
14. If the card is found, you will get a blank GPSolution window. Go on to *Step #15*. If the card is not found, check your cables, power supply and COM port settings and try again.
15. Select View | Logging Control from the main menu or click on the **LOGGING CONTROL** icon:



16. Click on the **BINARY** button (upper right):

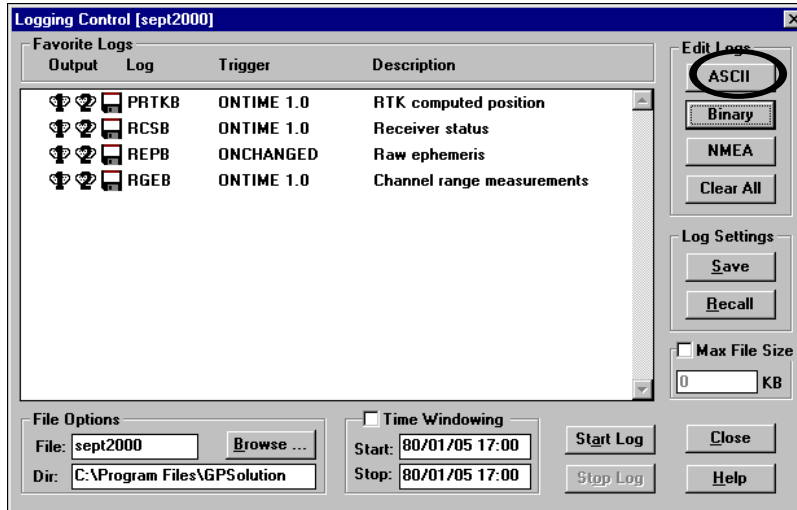


17. Select the items as shown here:

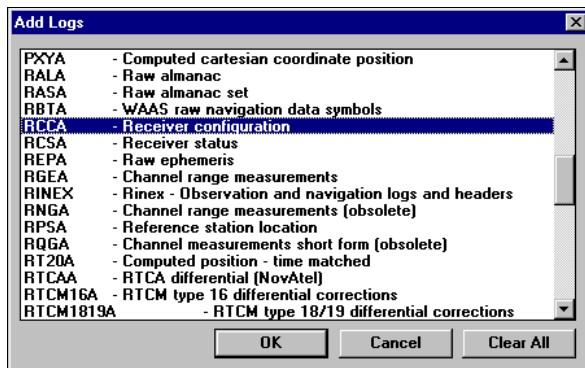


Click on the **OK** button.

18. You will be returned to the Logging Control Window. Click on the **ASCII** button:

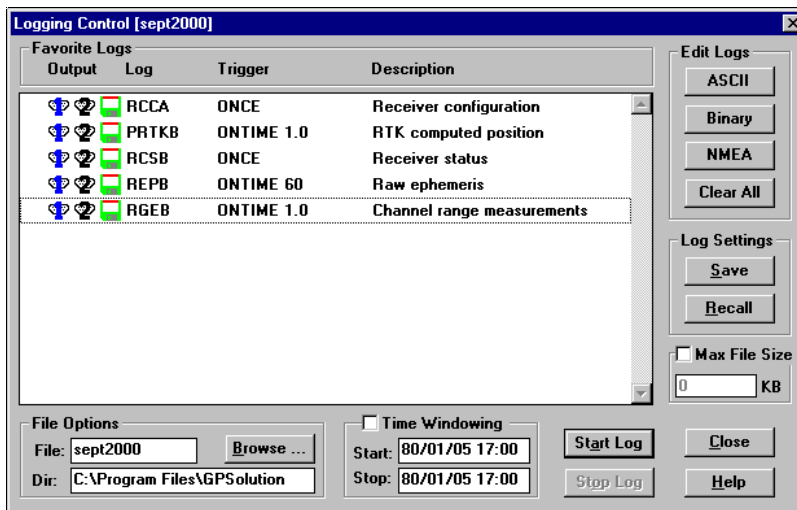


19. Select **RCCA** as shown here:

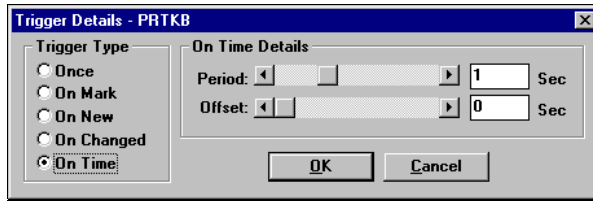


Click on the **OK** button.

20. You will be returned to the Logging Control Window. Now set the parameters so they look like this (see *Step #21*):

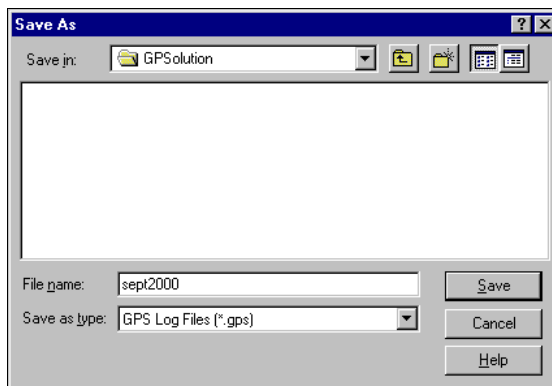


21. The Output column of the Favorite Logs section contains icons that represent each of the receiver output ports (COM1, COM2 and File). Clicking on the appropriate icons will send the specified log to the selected port or file at the rate specified by the trigger (see *Step #22*). To save each log to file, click on its disk icon so that it appears green. Ignore the COM1 and COM2 icons.
22. Changing the wording in the Trigger column for each log is a simple process. Click on the trigger in the row for the log whose trigger you want to change. The Trigger Details dialog will appear:



If you select the Once trigger type, the On Time Details section will appear gray. If you select the On Time trigger type, you can set the period and offset in the On Time Details section.

23. Once you have made your trigger and timing selections, click the **OK** button to return to the Logging Control window.
24. Click on the **Browse ...** button (bottom left):



In the Save As dialog, enter a file name in the File Name field. The default file type is GPS. Click on the **Save** button. Your chosen logs will be saved to this file.

25. When you are ready, click on the **Start Log** button (bottom right) to begin logging data to a file.
26. Continue to record data for at least 30 minutes.
27. Click on the **Stop Log** button.
28. Click on the **Close** button.
29. Select Card | Exit from the GPSolution main menu.
30. The data will now be available in the file you specified in the Logging Control window.

For more information, please contact the Customer Service Department:

NovAtel Inc.

1120 – 68 Ave. N.E.

Calgary, Alberta, Canada, T2E 8S5

Phone: 1-800-NOVATEL (in Canada or the U.S.) or +1-403-295-4500

Fax: 403-295-4501

E-mail: support@novatel.ca

Website: www.novatel.ca